



aqua[®]
de-light

www.aquadelight.com

Installation Instructions ILLUMINATOR COMPACT PLUS MONOCHROME Underwater-Illumination

Important information: The aqua de-light ILLUMINATOR can only be used under water. Ensure that the device is fully submerged before it is switched on.

1. Installation-related remarks

- 1.1 In order to illuminate a swimming pool, one LED aqua de-light ILLUMINATOR COMPACT PLUS should be installed per approx. 30 m³.
- 1.2 To avoid glare the lights should not be placed towards the viewing direction. We recommend installing the lights at approx. 0.45 m below the edge of the swimming pool.
- 1.3 The installation always depends on type of pool. We generally recommend that the ILLUMINATOR is installed with one of the three following possibilities.

2. Technical data

MONOCHROME ILLUMINATOR:

Technique: MONOCHROME ILLUMINATOR for low voltage
Illuminator input: 12 V, DC
Peak current: 2,2 A
Peak power input: 24 Watts
Light intensity: +/- 1600 Lumen
Level of protection: class II, IP 68

Transformer:


Mains voltage: 170-250 V / 50-60 Hz
Secondary voltage: 12V / 3,3 A, DC
Power output: max. 40 Watts

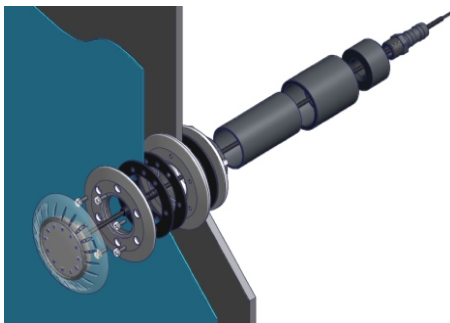
Please note:

The MONOCHROME ILLUMINATOR must only be operated with an original aqua de-light DC power supply unit !


3. Installation Instructions

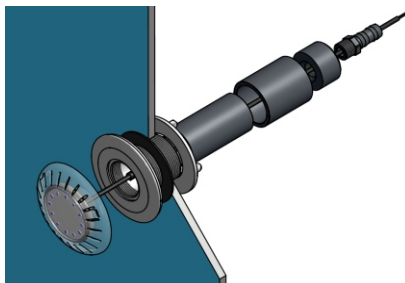
3.1 Drawing 1 - Installation for Liner Pools

- 1x MONOCHROME ILLUMINATOR
Ø120 mm with 18 LEDs, 0,2 m cable,
IP 68 female connector and red -Ring
- 1x 2,6 m cable with IP 68 male connector
- 6x stainless steel screws M5 x 14 mm
- 1x ABS-flange
- 2x silicone gaskets for liner
- 1x wall inlet R2" ABS
- 1x silicone gasket for pool surface
- 1x locknut ABS
- 1x extension pipe Ø50 mm PVC
- 1x straight joint PVC
- 1x end cap Ø50 mm with thread 1/2" PVC
- 1x conduit socket, thread 1/2" PVC




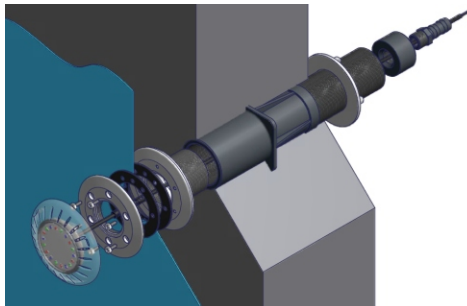
3.2 Drawing 2 - Installation for Polyester Pools / Stainless Steel Pools

- 1x MONOCHROME ILLUMINATOR
Ø120 mm with 18 LEDs, 0,2 m cable,
IP 68 female connector and red -Ring
- 1x 2,6 m cable with IP 68 male connector
- 1x wall inlet R2" ABS
- 1x silicone gasket for pool surface
- 1x locknut ABS
- 1x extension pipe Ø50 mm PVC
- 1x straight joint PVC
- 1x end cap Ø50 mm with thread 1/2" PVC
- 1x conduit socket, thread 1/2" PVC



3.3 Drawing 3 - Installation for Concrete Pools

- 1x MONOCHROME ILLUMINATOR
Ø120 mm with 18 LEDs, 0,2 m cable,
IP 68 female connector and red -Ring
- 1x 2,6 m cable with IP 68 male connector
- 6x stainless steel screws M5 x 14 mm
- 1x ABS-flange
- 2x silicone gaskets for liner
- 1x wall inlet R2" ABS
- 1x wall inlet for concrete R2" PVC
- 1x locknut ABS
- 1x end cap Ø50 mm with thread 1/2" PVC
- 1x conduit socket, thread 1/2" PVC

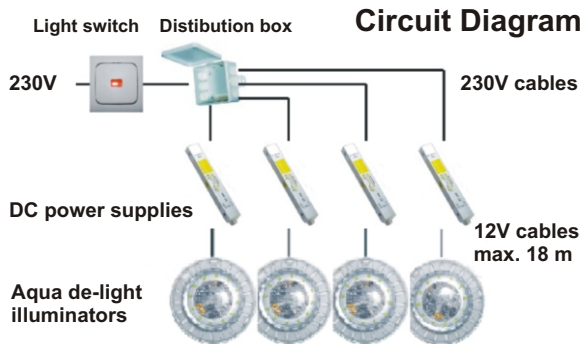


4. Electrical installation

The entire electrical installation must be carried out by a skilled and authorized electrician in accordance with your country's relevant standards. Place the power supplies in a dry area outside the danger zone (min. 3 m), e.g. in an installation cabinet and run the low voltage cables in the shortest possible manner to the individual illuminators.

The temperature of the power supply units must not exceed the maximum of 40°C. Air circulation must be guaranteed on 3 sides. Stacking the power supplies or putting them in rows is not permitted and causes overheating.

If you need more than power supplies, connected them parallel and attach them to the 230 V mains with a single regular power switch (see drawing).



Important note!

It is absolutely essential to use one original DC power supply per ILLUMINATOR. They are adapted in voltage and power to work with our product. If power supplies other than the original units are used, no warranty can be given. It can even be a safety risk to yourself.

Proper functioning of the ILLUMINATOR can only be secured if the low voltage cable between the power supply and the illuminator is as short as possible. If this cable has to be extended, use a cross-section of 1,5 mm² up to a length of 10 m and a 2,5 mm² up to a length of 18 m. Longer cables can produce loss of power and other malfunctions.

Your authorized dealer

V 11e/2010

www.aquadelight.com

Illumination

aqua
de-light